



WHITLOCK
BULL BARS

SC812

SCANIA

G CABS, P CABS

2010 - 2018

FITTING INSTRUCTIONS



BOLT KIT

MOUNT TO TRUCK

4 = M14 X 80 2.0P GR10.9 BOLTS
4 = M14 FLAT WASHERS
4 = M14 SPRING WASHERS
4 = M14 CONE NUTS WELDED TO WIRE

4 = M14 X 60 2.0P GR10.9 BOLTS
4 = M14 FLAT WASHERS
4 = M14 SPRING WASHERS
4 = M14 NYLOC NUTS

4 = 5/8" X 5 1/2" BOLTS
8 = 5/8" FLAT WASHERS
4 = 5/8" NYLOC NUTS

FOGLIGHTS (OPTIONAL)

4 = M10 X 30 BOLTS
8 = M10 FLAT WASHERS
4 = M10 NYLOC NUTS

4 = M8 X 25 BOLTS
8 = M8 FLAT WASHERS
4 = M8 NYLOC NUTS

4 = DAF LOOM EXTENSIONS

ACCESSORIES

2 = 30X19 HRB @ 20MM
2 = 30X19 HRB @ 24MM
2 = M24 EYEBOLTS @ 180MM
2 = M24 EYEBOLTS @ 190MM
2 = SCANIA IND/PARK DOUBLER LOOM
8 = 5/8 WASHERS (SPACERS FOR MOUNT)
1 = STAINLESS NUMBER PLATE GUARD

Remove the front bumper centre and outer sections



Also remove the fold down grille section



remove the fog light assembly both sides if fitted



remove the fog light assembly both sides if fitted



Current situation.



Working on one side at a time, remove the factory bolts attaching the front bracket to the under-run. Also remove the lower under-run bolts. Leave the bolts slightly loose.



Fit the mount to the vehicle using the supplied upper M14 x 80 bolts. Fit the supplied M14 x 60 bolts in the lower under-run holes ensuring that the original 6 mm washers are replaced between the mount and the under-run. Check that mount is vertical and level. Leave the bolts slightly loose.

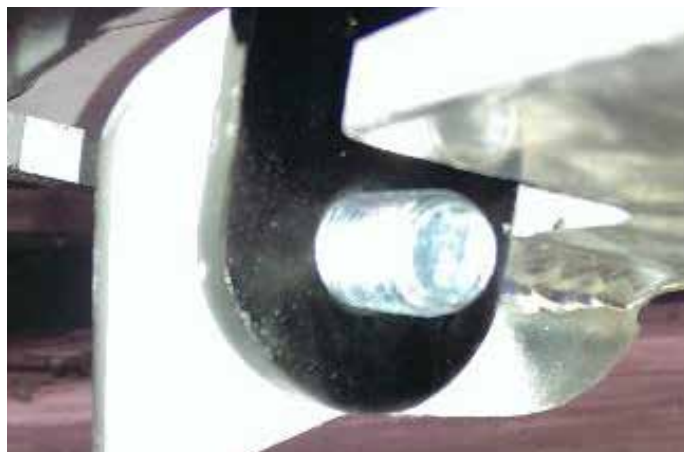


Ensure the fold down grille has been removed



Fit the RHS cross member using the supplied 5/8" x 5-1/2" bolts. Before tightening check that width between the inside of the aluminium hinges inside the Bullbar is greater than the measurement to the outside of the steel hinges on the chassis plate. Adjust the chassis plates to suit. Tighten all bolts and check the front of cross member is vertical and that the cross member is level.

Fit the bar up to the mount (being careful to avoid the radar sensor) lift the bar up in an UPRIGHT POSITION then use the two lower centre 170mm eye bolts to secure the bar. Then fit the supplied 5/8"x2" hinge bolts. DO NOT OVER TIGHTEN THE HINGE BOLTS.



Check there is 485mm from top of mount plate to rear of beam top flange



To ensure the cab clears the bull bar when the cab is tilted, lower the bar and check the opening is 485mm minimum.



Fit the lights to the bar if required using the supplied M10 x 30 bolts for the outside and the supplied M8 x 25 bolts for the centre. Fit the four loom extensions as supplied to the driving and fog lights.
Fit the supplied loom doublers between the vehicle plugs for the park/indicator.



Refit the fold down centre grille.
(TO REDUCE THE RISK OF DAMAGE DO
NOT REFIT THE CENTRE PANEL UNTIL THE
BULLBAR FIT IS COMPLETE AND THE BAR
IS IN POSITION)



Raise the bar and secure with the four eye
bolts. Check that the bar is level.
The outer bumper sections can be cut and
replaced if desired
FINISHED,





**Congratulations YOU HAVE
FITTED Your NEW**

**SC812
WHITLOCK
BULL BAR**



WHITLOCK
BULL BARS

CLIENT REVIEWS

Share Your Experience:

We'd love to hear about your experience! Share your feedback and photos of your truck with your portrait with the bull bars installed by emailing us at sales@whitlockbullbars.com.au



SCAN QR CODE
**HAVE
YOUR SAY**



FRONT



ISOMETRIC

WHITLOCK BULL BARS TAKE PRIDE IN PROVIDING HIGH-QUALITY BULL BARS THAT NOT ONLY ENHANCE THE LOOK OF YOUR TRUCK BUT ALSO PROVIDE UNPARALLELED PROTECTION.

YOUR FEEDBACK HELPS US IMPROVE OUR PRODUCTS AND SERVICES TO BETTER SERVE YOU.